



VAC-AIR INDUSTRIES

Model TK



User Guide

5254 N. 124<sup>th</sup> Street  
Milwaukee, WI 53225  
(414)353-5270 | [vacairind.com](http://vacairind.com)

Congratulations on your purchase of Vac-Air Industries products. With proper installation, use and maintenance, your new cutter will provide years of trouble-free and industry-leading performance. Please read these instructions carefully.

If a regulator/lubricator and tool balancer were included with your purchase, please follow the instructions on how to install. If you purchased the cutter only, please skip the regulator/lubricator and tool balancer installation and follow the Tool Installation.

### **Tool Balancer Installation**

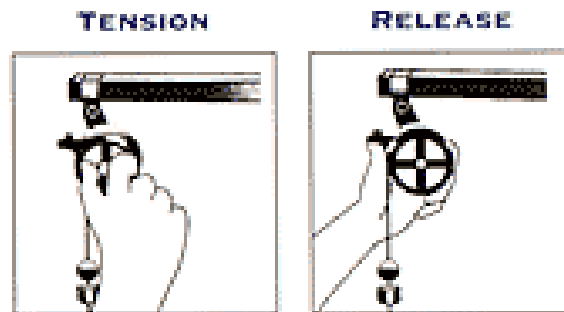
Mount the balancer to a tool support by using the “S” hook provided.

Attach the snap hook at the end of the balancer cable to the suspended tool.

Determine the distance from the balancer required to place the tool in the desired retracted position. This distance is achieved by loosening the clamp on the cable and repositioning it up or down as required.

The balancer tension can be set without the need for tools (see figure below). The tension should be set at the lowest setting that permits the tool to return to the retracted position.

The balancer features an incremental tension release which prevents the tool from suddenly dropping to the work surface and protects the operator.



### **Regulator/Lubricator Installation**

Shut off air pressure. Install in air line:

- with air flow in direction of arrow on the body. In some cases, IN may be stamped next to the inlet port.
- upstream of lubricators, and cycling valves. Reverse flow regulators can be installed upstream or downstream of cycling valves,
- as close as possible to the device being served.
- at any angle.

### **Pressure Adjustment**

Turn adjustment clockwise to increase and counterclockwise to decrease the outlet pressure setting. To reduce the pressure, first reduce to a pressure less than that desired, then increase to the desired outlet pressure.

## **Tool Installation**

Attach the clip on the end of the balancer to the eye-bolt attached to the top of the tool. This will allow the tool to suspend from overhead.

Lower the tool to proper working level using the adjustment on the tool balancer.

Attach the air hose to the tool using the quick disconnect at the end of the hose.

Suspend the air hose from overhead to reduce tension on hose.

Adjust the air pressure on the air pressure regulator to proper working air pressure.  
(90psi-120psi recommended)

**Caution!** Air pressure greater than 120psi may damage the blades.

## **Lubrication**

Proper Lubrication: *Food Machinery Oil ISO 46 / Food Grade Hydraulic White Mineral Oil A/W*

Check oil in the lubricator before operation of the tool. Proper lubrication will ensure long lasting and proper functionality of the tool. The oil will help lubricate moving parts and lengthen the life of the internal seals.

Proper lubrication: 1 drop of oil into tool per 10 cycles.

## **Operation**

Keep hands clear from blades.

With the air pressure connected to the tool, press the trigger to activate the blades.

Keep hands within guards when operating.

Use stainless steel mesh glove on non-operating glove for safety.

**Caution!** Always operate tool with guards in place.

**Caution!** Always operate tool with eye and ear protection.

## **Cleaning**

For best results, use warm water and mild detergent (ex. Dish soap) and rinse with hot water.

**Caution!** Do not use ALKALINE, IODINE or any ACID.

Cover the tool when not in use.

## **Maintenance**

### **Blade adjustment-**

**Caution! Adjusting tension on blades can be dangerous!!**

With the tool attached to air pressure, activate the blades by pressing on the trigger.

Keep trigger depressed with the blades in the closed position.

Tighten the Blade Hinging Body Bolt and the #16 nut until the blades do not open.

Release the trigger.

Slowly unscrew the nut from the Blade Hinging Body Bolt until the blades snap open.

Test the blades by cycling the blades several times.

The blades should activate and retract with ease.

For best results, keep the blades sharp.

For proper sharpening, send the blades or the tool to Vac-Air Industries.

Vac-Air Industries  
5254 N. 124<sup>th</sup> Street  
Milwaukee, WI 53225  
(414)353-5270 | vacairind.com

## **Notes**

# TK CUTTER



## Description

- No overhead valve system
- One air line required
- Air trigger operated
- Designed for heavy duty service on processing lines
- Designed for turkey, beef, pork, lamb and rabbits
- USDA approved
- U.S. patent number: 3,816,874, 3,893,237

## Specifications

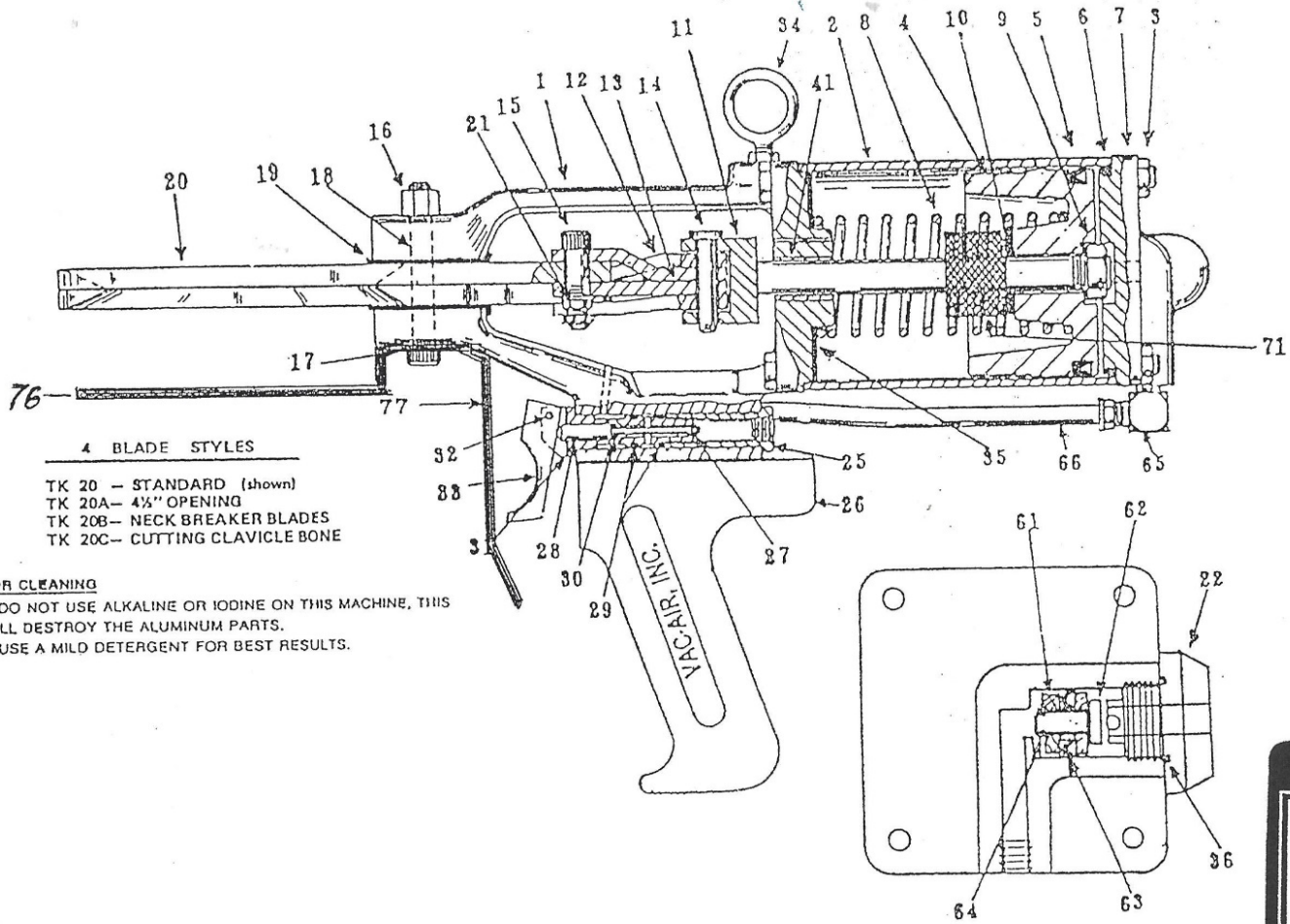
- Operating pressure: 80-120 PSI
- Air consumption: 14 CFM
- Capacity: 1,800 cycles per hour
- Overall length: 17"
- Weight: 9.5 lbs., machine complete 16 lbs.
- Blade opening: standard TK 20 (3"), 20A (4-3/4")
- Accessories: Package 4

## Different blade styles available



[vacairind.com](http://vacairind.com) | (414) 353-5270

# MODEL TK HOCK & NECK KNIFE



**4 BLADE STYLES**

- TK 20 - STANDARD (shown)
- TK 20A - 4 1/2" OPENING
- TK 20B - NECK BREAKER BLADES
- TK 20C - CUTTING CLAVICLE BONE

**FOR CLEANING**

\*\*DO NOT USE ALKALINE OR IODINE ON THIS MACHINE, THIS WILL DESTROY THE ALUMINUM PARTS.  
 \*\*USE A MILD DETERGENT FOR BEST RESULTS.



VAC-AIR INDUSTRIES

	<b>TK Parts List</b>	
TK 1	Body w with trigger guard	
TK 2	Cylinder	
TK 3	Cylinder bolt, Nut	
TK 4A	Piston	
TK 5A	Piston Seal	
TK 6	Static end cap o-ring	
TK 7	Cylinder end cap	
TK 8	Spring	
TK 9	Piston nut & lockwasher	
TK 10	Washer	
TK 11	Piston shaft	
TK 12	Outside hinging plates (2 required)	
TK 13	Inside hinging plates	
TK 14	Piston pin & cotter key	
TK 15	Blade shoulder bolt (2 required)	
TK 16	Locking Nut	
TK 17	Locking washer (2 required: 1 closed and 1 open)	
TK 18	Blade hinging body bolt	
TK 19	Set of brass shoes	
TK 20	Set of blades-standard	
TK 20A	Blades 4 1/2" opening	
TK 21	Locknut (2 required)	
TK 22	Exhaust silencer	
TK 25	Valve air coupling	
TK 27	Air intake o-ring	
TK 28	Air valve	
TK 29	Static o-ring	
TK 30	Air exhaust o-ring	
TK 31	Brass air body	
TK 32	Brass trigger pin	
TK 33	Trigger and set screw	
TK 34	Eye bolt	
TK 35	Piston cushion	
TK 36	Exhaust seal o-ring	
TK 37	Brass elbow	
TK 38	Regulator, lubricator, assembly #39, 40, 42,43 & 50	
TK 39	Regulator	
TK 40	Lubricator	
TK 41	Bronze bearing	
TK 42	Gauge	
TK 43	Air hose- 8 ft. long	
TK44R	10lb. Reel Balancer	
TK 45A	Complete set of o-rings #5A,6,27,30,36,63,64, &29(2)	
TK 46	Trigger assembly #25,27,28,30,31,33,&29(2)	
TK 47	Trigger o-ring kit	
TK 50	Hose disconnect	
TK 60	Auto exhaust valve assembly #61,62,63,64	
TK 61	Auto exhaust valve body	
TK 62	Auto exhaust valve seat	
TK 63	Auto exhaust seal	
TK 64	Auto exhaust o-ring	
TK 65	Plastic tube fitting	
TK 66	Plastic tube	
TK 67	Plastic sleeve	
TK 68	O-ring extractor kit	
TK 69	Electric blade sharpener	
TK 70	Blade sharpening stone	
TK 71	Shock cushion	
TK 75	Spare parts kit	
	#8,9,10,11,12,13,14,16,17,18,33,35,71,15(2),21(2)	
TK 76	Trigger double prong guard	
TK 77	Trigger guard	
TK 78	Closure Guard (each)	