



SEDGBEER

AT THE FOREFRONT OF **POULTRY PROCESSING**

BAYLE MP7 SET-UP, MAINTENANCE AND SPARES

The MP7 dry plucking machine does an excellent job of plucking all types of poultry and game birds. No special skill is required to operate this machine. The birds are manually offered up to the plucking head on the machine. The suction developed at the head draws the feathers in where they are gripped by seven rotating discs and plucked from the body. There is no contact between the skin of the bird and the discs. Depending on the type of bird, plucking will take between 2 and 6 minutes.

The MP7 is fitted with a single phase 0.75kw motor.

The demand for a high quality product has led processors to look for equipment that will process their product to the high standard demanded by the consumer. We believe that the Bayle MP7 dry plucking machine meets that criteria giving a high quality finish on all birds from quail through to stag turkeys.

It has advantages over the wet plucking of a small number of birds. There is not the long wait for water to heat up and the constant attention to temperature control. More importantly there is an improved shelf life for all types of dry-plucked birds and a superior finish.



**BUILT
BY**

IMPORTANT SAFETY INSTRUCTION

CAUTION :

- We recommend the use of ear defenders and safety glasses.
- Before use, connect a loose open weave bag or sack to the exit pipe of the machine to collect the feathers. (It is important that the passage of air through the sack does not become restricted).
- Switch off, remove the plug from the socket and ensure that moving parts have stopped rotating before leaving the machine unattended and before changing, cleaning or inspecting any parts of the machine.
- For safety reasons, remove the plug from the socket when the machine is not in use and during storm period.
- Do not allow children or visitors to come near the work area or to touch the machine or mains cable.
- Electrical parts should not be in contact with rain or water.
- If these instructions are not followed the guarantee will be invalid.
- Before use, operators should read through the operating

instructions completely.

- Check that the mains voltage corresponds to that given on the machine nameplate.
- Ensure that a circuit breaker/ residual current device (RCD) is used if the machine is to be operated outside of a building.

INSTALLATION

Check that there has been no damage during transit.

Fix the two legs with the 4 bolts and nuts supplied (see drawing).

Check that the legs are in the correct position and that the machine is stable.

Connect the electric motor to a plug 220/240Vca – 50/60Hz - I= 6.65A following official regulation.

Cable and extension cable:

Always use an approved cable and extension cable (if necessary) suitable to the power input.

Before use, inspect the cable for signs of damage, wear and ageing.

When using a cable reel, always unwind the cable completely.

SPECIFICATION

Weight	40 kg
Dimensions	78 x 57 x 124 cm
Motor	220V 0.75kW
Discs	7
Height of legs	76 cm

CLEANING

Caution:

Before cleaning switch off and remove the plug from the socket. Wait for moving parts to stop.

Do not use a high pressure washer for cleaning the machine. Start from the top and work down avoiding the electrical parts.

Clean the machine straight after use to avoid blood and feathers sticking to the inside of the frame.

If using any cleaning product ensure that it is safe to use with aluminium.

Caution:

Before using the machine after cleaning make sure that all parts are completely dry.

To clean the plucking discs:

Take them out of the machine through the movable door (2338).

Before replacing, grease all four sides of the square shaft (1008). Ensure the discs are put back in the correct order starting with No 3 and that the disc numbers are located in the same position on the square shaft.

MAINTENANCE

- **Maintenance should be carried out only by operators who have read the instruction book.**
- **Switch off and remove the plug from the socket...**
- **Check that there is no damage to any part of the machine. If necessary change parts before using the machine again.**
- **Check the rotating discs, rollers, square shaft. If any damage or wear change parts before using the machine again**

TROUBLESHOOTING

Machine does not start:

- **Check that power cable is properly connected.**
- **Check that discs and fan are rotating freely.**
- **Check that nothing is inside the fan.**

Discs do not rotate:

- **Check the belt.**
- **Check the square shaft.**

Poultry hard to pluck:

- **Check the plucking discs**
- **Check rollers and spring**
- **Check that the suction from the fan is correct.**

MP7 SPARES

Part no.	Item
SEMP7/1	Discs - set of 7
1008	Shaft - square
2320/MP7	Plunger roller complete
2327	Plunger - roller
2326	Plunger - sleeve
2323	Plunger - spring
4748	Plunger - lock nut & screw
2321	Plunger roller yoke
A34	Belt
2338	Plucker unit door
2346	Pully locking plate
5241	Spring Guide

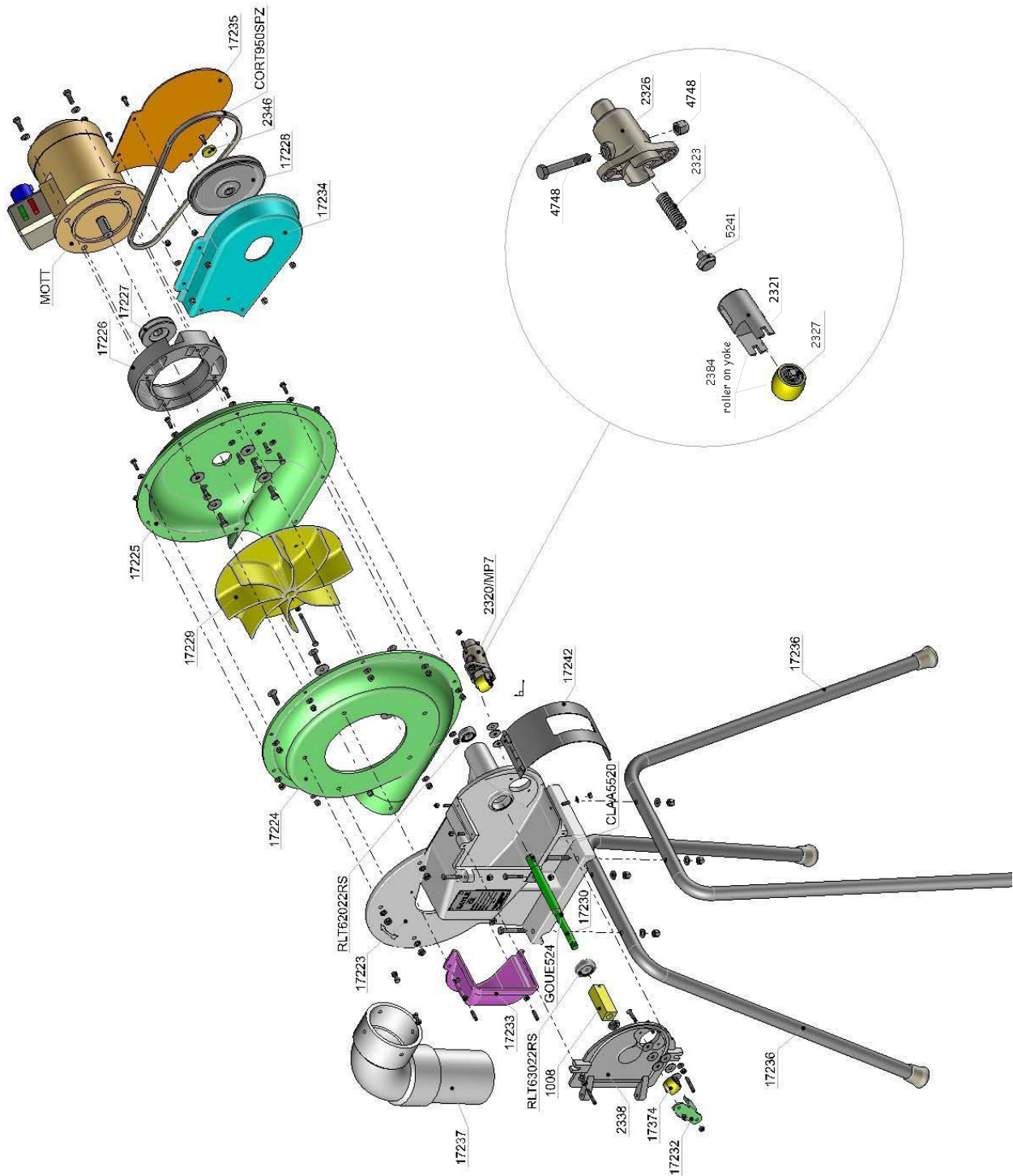
Part no.	Item
17242	Disc cover MP7
17223	Body
17224	Half body - right turbine
17225	Half body - left turbine
MOTMO 7530 B5MA	Motor - single phase
17226	Motor bearing ring
17229	Turbine MP7
17230	Round shaft for discs
17232	FIXED roller yoke
17233	Visit cover
17234	Belt gaurd
17235	Belt gaurd cover
17237	Feather outlet pipe
2311/MP7	No 3 disc
2312/11	No 4 disc
2313/11	No 5 disc
2314/11	No 6 disc
2315/11	No 7 disc
2316/11	No 8 disc
2317/MP7	No 9 disc

WHEN ORDERING

Please specify part numbers and name. This list contains the most commonly used spares, others are available - please contact us for details.

T +44 (0)1761 420 058
info@sedgbeer.co.uk

www.sedgbeer.co.uk



CE

EC DECLARATION OF CONFORMITY

BAYLE SA declares that the plucking machine "MP7" conform to Provisions of the labour regulations and namely its articles R.233-73, R. 233-76, R.233-83, R.233-83-2 Provisions of the orders 82-766 et 92-767 du 29/07/1992 has been subject to the EC examination by autocertification.

JP BAYLE
Managing director
BAYLE SA
BP 705
42484 La Fouillouse Cedex
FRANCE

BAYLE GUARANTEE

This machine has been designed to a high standard and approved after extensive testing and strict quality control checks in our factory.

The guarantee is valid from 12 months from the date of sale to the first retail purchaser, which must be verified by a purchase invoice or similar document.

The guarantee covers all parts or components which fail due to faulty workmanship or materials. The guarantee does not cover machines where defects or poor performance are due to misuse, accidental damage, neglect, faulty installation, unauthorised modification or attempted repair, or failure to observe requirements and recommendations set out in the instruction book.

We reserve the right to repair or replace defective parts. Parts which have been replaced become our property.

This guarantee does not cover the following consummable parts:

- Plucking discs
- Square shaft (Ref:1008)
- Rulers (Ref:17374)
- Belt (Ref:CORT950SPZ)

The guarantee will only be valid if defects are reported without undue delay (including shipping damage).

Work carried out under guarantee does not extend the guarantee period.

The guarantee obligations assumed by us shall exclude any further claim on the part of the buyer, such as refunding of sale price, reduction of sale price or any claim for compensation.
