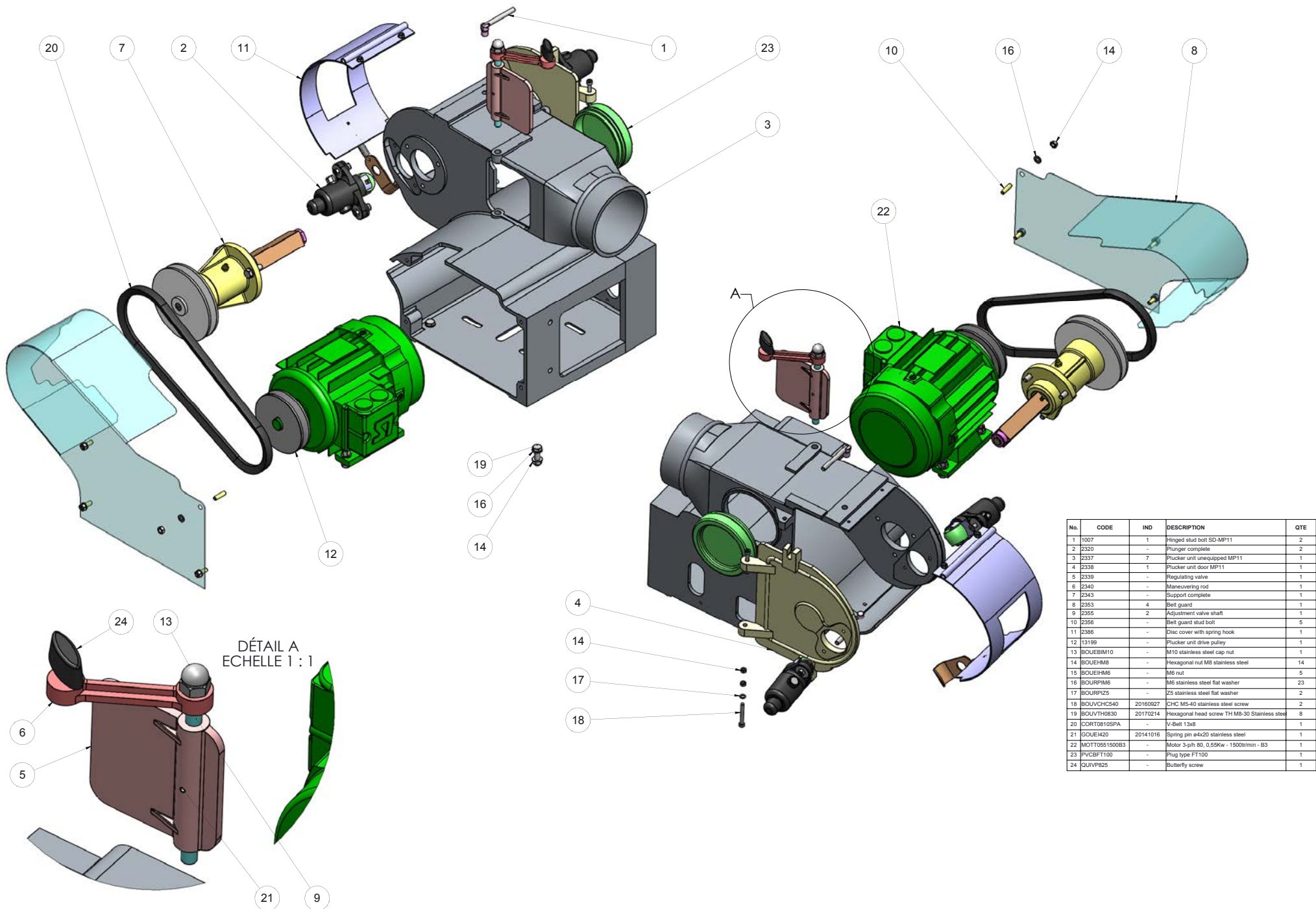
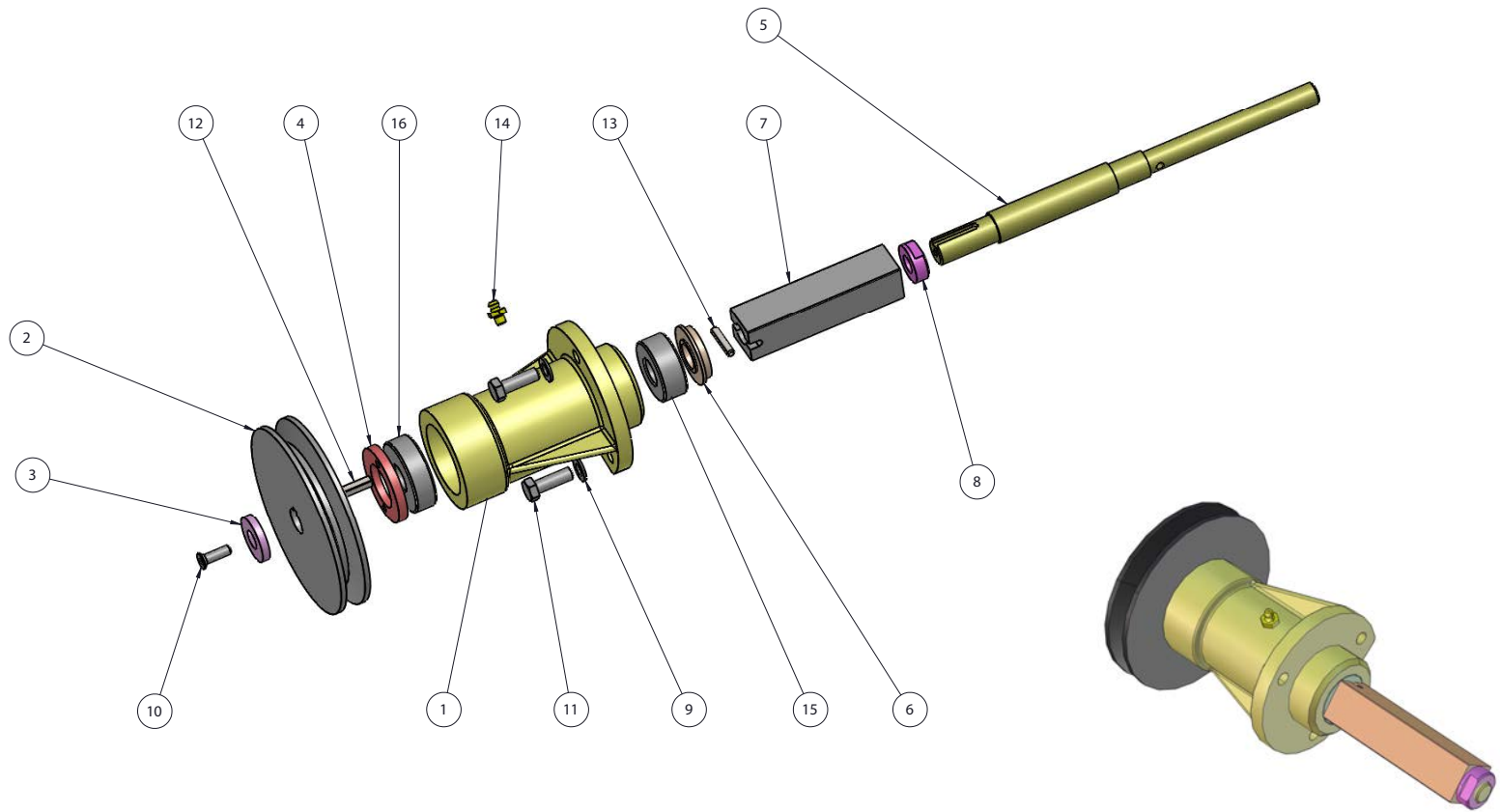


TO ORDER SPARES
 Email:
info@sedgbeer.co.uk
 Call:
 +44 (0)1761 420 058
www.sedgbeer.co.uk

No.	CODE	IND	DESCRIPTION	QTE
1	2387M	-	Connection collar	1
2	22934	-	Chassis assembly MP11	1
3	BOUEIH8	-	M8 nut	4
4	BOURPI8	-	Stainless steel flat washer M8	8
5	BOUVTH0830	20170214	Hexagonal head screw TH M8-30 Stainless steel	4
6	QUIBFR30M12	-	Fixed plug with M12 tapped hole for Ø30x1 round tube	4
7	QUIVARTZ1250	-	Articulated cylinder ø50 zinc-plated axis M12 ref 176105 ACC	4
8	SEMP11/3	-	Set of 11 discs	1
9	SEMP11/8	-	Complete 380V electric control kit	1
10	SEMP11T/1	-	Complete plucker block	1
11	SEMP11T/2	-	Three-phase MP11 turbine sub-assembly	1

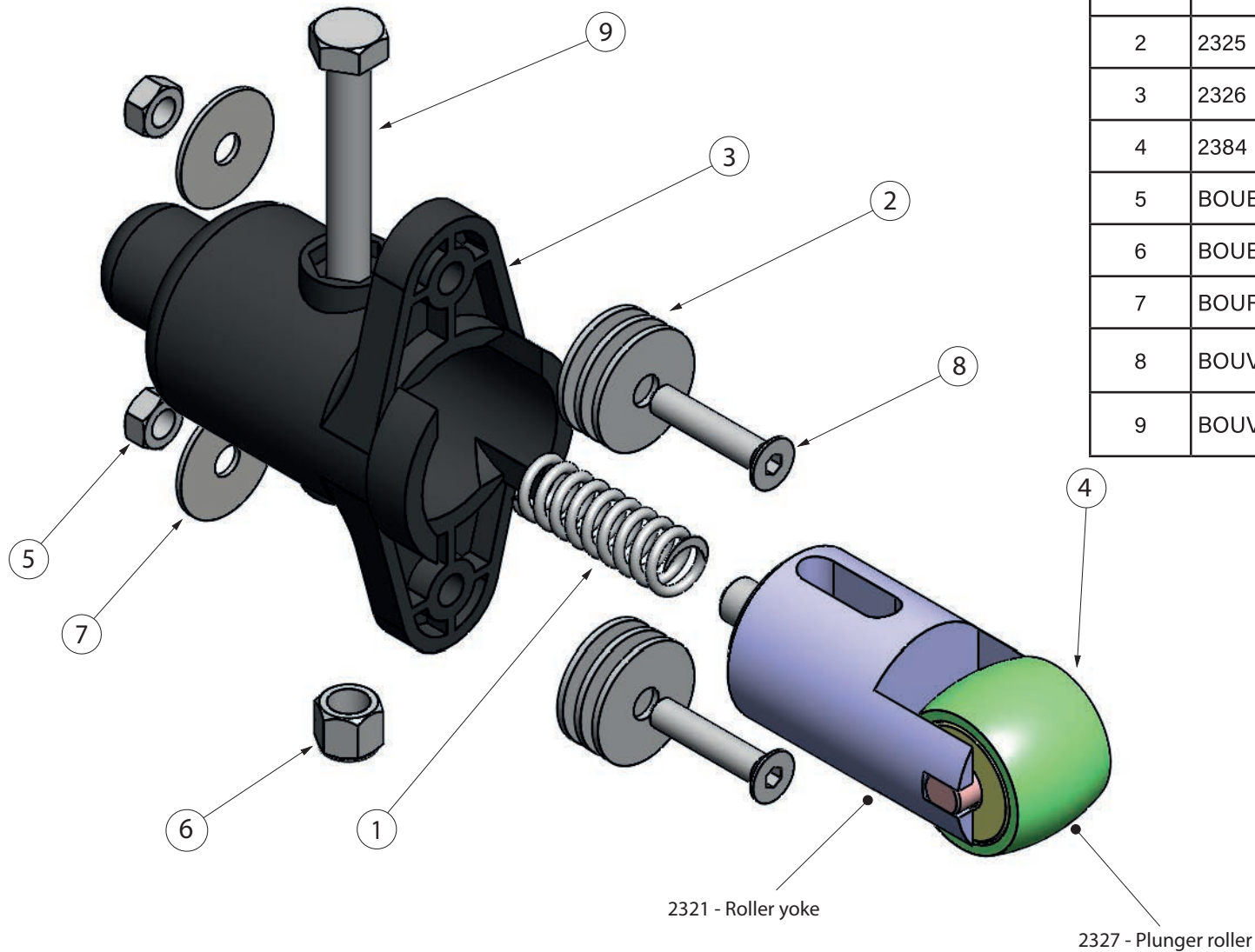


No.	CODE	IND	DESCRIPTION	QTE
1	1007	1	Hinged stud bolt SD-MP11	2
2	2320	-	Plunger complete	2
3	2337	7	Plucker unit unequipped MP11	1
4	2338	1	Plucker unit door MP11	1
5	2339	-	Regulating valve	1
6	2340	-	Maneuvering rod	1
7	2343	-	Support complete	1
8	2353	4	Belt guard	1
9	2355	2	Adjustment valve shaft	1
10	2356	-	Belt guard stud bolt	5
11	2386	-	Disc cover with spring hook	1
12	13199	-	Plucker unit drive pulley	1
13	BOUEBIM10	-	M10 stainless steel cap nut	1
14	BOUEHMB	-	Hexagonal nut M8 stainless steel	14
15	BOUEHM6	-	M6 nut	5
16	BOURPIM6	-	M6 stainless steel flat washer	23
17	BOURPIZ5	-	Z5 stainless steel flat washer	2
18	BOUVCHC540	20160927	CHC M5-40 stainless steel screw	2
19	BOUVTH0830	20170214	Hexagonal head screw TH M8-30 Stainless steel	8
20	CORT0810SPA	-	V-Belt 13x8	1
21	GOUEI420	20141016	Spring pin e4x20 stainless steel	1
22	MOTT0551500B3	-	Motor 3-ph 80, 0,56Kw - 1500t/min - B3	1
23	PVCBFT100	-	Plug type FT100	1
24	QUIVP825	-	Butterfly screw	1

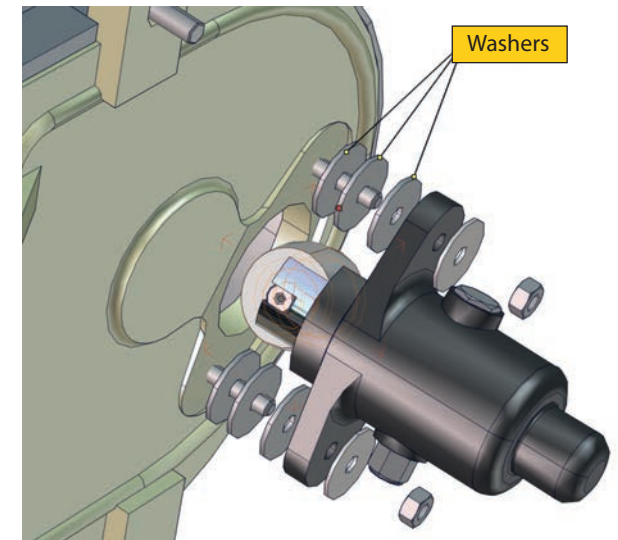


No.	PART REF	IND	DESCRIPTION	QTE
1	2344	-	MP11 Support - unequipped	1
2	2345	1	MP11 Support - pulley	1
3	2346	-	MP11 Pulley locking plate	1
4	2347	-	MP11 support - threaded ring	1
5	2348	-	MP11 round shaft	1
6	2349	-	Support spacer	1
7	2350	2	Square shaft	1
8	2351	-	Lock nut	1
9	BOURPIM8	-	M8 stainless steel flat washer	3
10	BOUVFHC620	-	Countersunk screw FHC M6-20 Stainless steel	1
11	BOUVTH0825	20170214	Hexagonal head screw TH M8-25 Stainless steel	3
12	CLAB5520	20150421	Parallel key form B 5x5mm lg20mm	1
13	GOUEI525	20141016	Spring pin ø5x25 stainless steel	1
14	GRADM6I	20150605	Straight grease nipple M6	1
15	RLT42032RS	20160222	Double row radial contact ball bearing 17x40x16	1
16	RLT63032RS	20150309	Ball bearing with 2 seats 6303 2RS 17.47.14	1

Support complete ref 2343

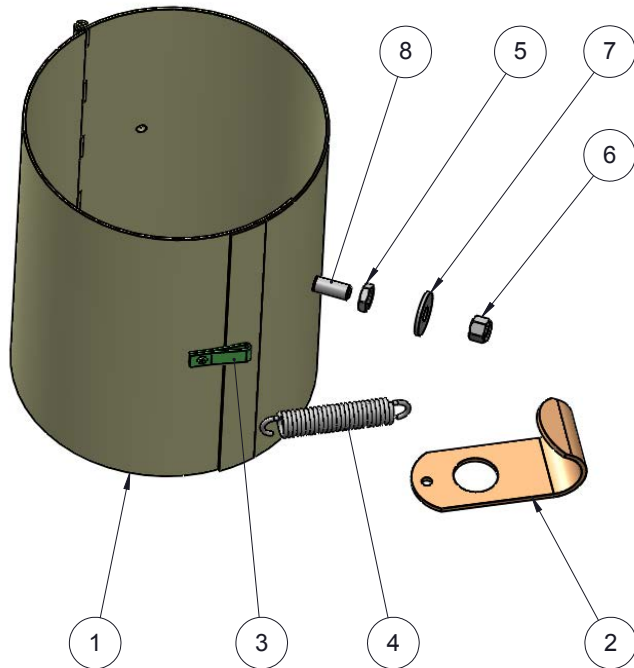


REF NO	PART NO	IND	DESCRIPTION	QTE
1	2323		Plunger spring	1
2	2325		Plunger support washer	6
3	2326	2	Plunger sleeve	1
4	2384		Plunger roller on a yoke	1
5	BOUEHM6		M6 Hex Nut	2
6	BOUEIHM8		M8 Nut	1
7	BOURPILL6		Stainless steel flat washer	2
8	BOUVFHC630		Countersunk screw M6 Stainless steel	2
9	BOUVTH0855	20170214	Hexagonal head screw M8 Stainless steel	1



Note: As the discs and the plunger spring wear, remove the washers one by one, (Ref 2), located between the plucker unit and the plunger. Remove the washer as soon as the disc set has too much lateral movement or if the disc cover is rubbed by the discs.

When replacing the plunger or the spring, put the 3 washers back in place.



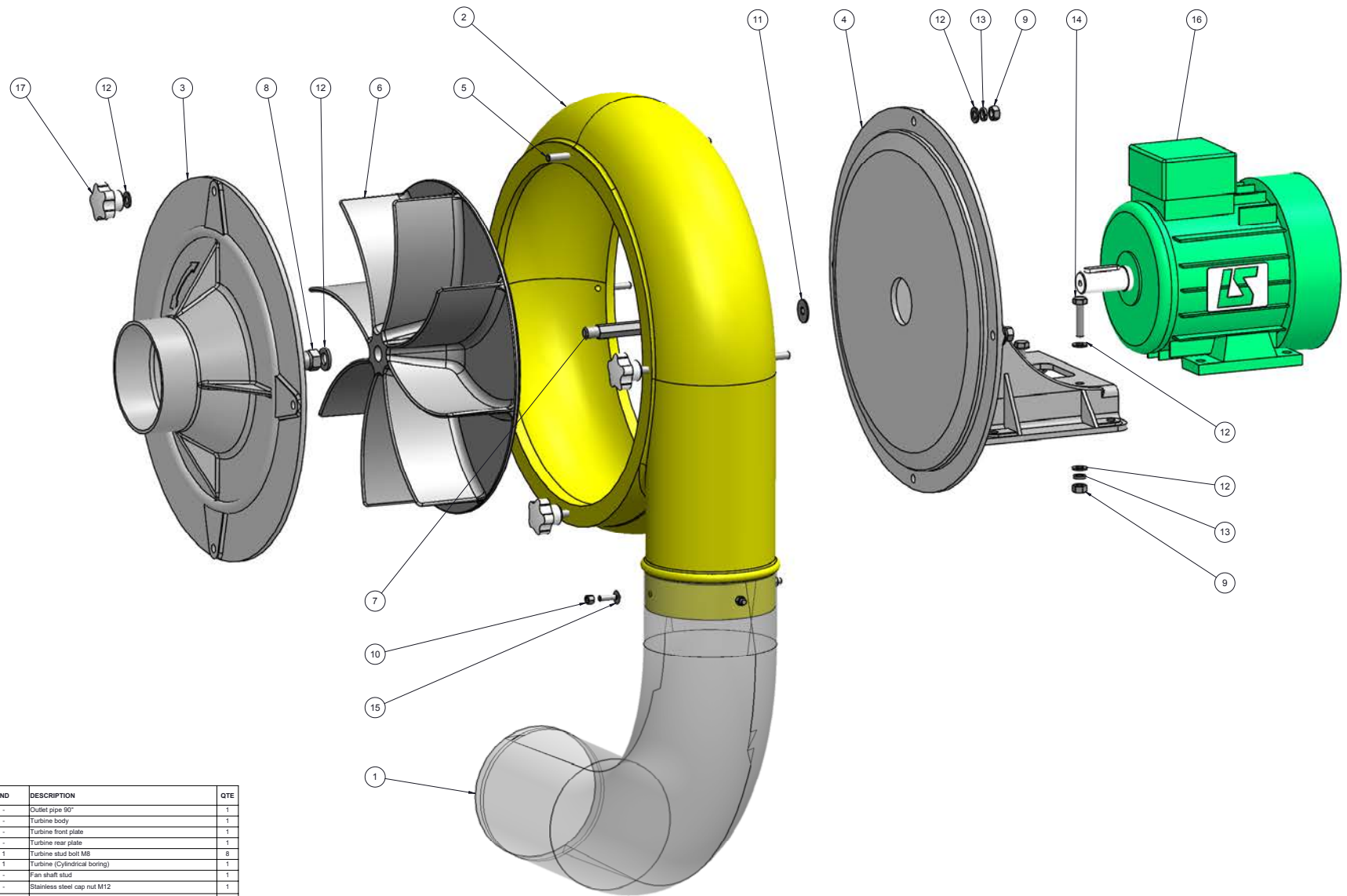
No.	PART REF	IND	DESCRIPTION	QTE
1	2387	-	Connection collar	1
2	16089	-	Connection collar hook	1
3	16090	-	Spring cage	1
4	16091	-	Connection collar spring	1
5	BOUEHBM6	-	M6 nut	1
6	BOUEIHM6	-	M6 nut	1
7	BOURPIL6	-	Stainless steel flat washer L6	1
8	BOUVTP0616	-	Pan head screw M6x16	1

TO ORDER SPARES

Email:
info@sedgbeer.co.uk

Call:
 +44 (0)1761 420 058

www.sedgbeer.co.uk



No.	PART REF	IND	DESCRIPTION	QTE
1	1091	-	Outlet pipe 60°	1
2	2336	-	Turbine body	1
3	2341	-	Turbine front plate	1
4	2342	-	Turbine rear plate	1
5	2352	1	Turbine stud bolt M8	8
6	10516	1	Turbine (Cylindrical boring)	1
7	10517	-	Fan shaft stud	1
8	BOUEBIM12	-	Stainless steel cap nut M12	1
9	BOUEHMB	-	Hex nut M8 inox	8
10	BOUEHMB	-	Nut H M8	4
11	BOURPIL8	-	Stainless steel flat washer L8	1
12	BOURPIM8	-	M8 stainless steel flat washer	17
13	BOURW8	20160927	Washer W Ø 8	8
14	BOUVTH0835	20170214	Hexagonal head screw TH M8-35 Stainless steel	4
15	BOUVTP0620	-	Plan head screw M8x20	4
16	MOTT1S3000B3	-	3 p-H an motor 1.5 Kw - 3000 rpm - B3	1
17	QUIBETM8	-	M8 threaded bakelite star button	4