

BAYLE MP11 SET-UP, MAINTENANCE AND SPARES

The demand for a high quality product has led processors to look for equipment that will process their product to the high standard demanded by the consumer. We believe that the Bayle MP11 dry plucking machine meets that criteria giving a high quality finish on all birds from quail through to stag turkeys.

The MP11 gives greater efficiency, whilst retaining quality of finish. Fitted with 11 discs it is at least 30% faster than a comparable 7-disc machine. These machines are now widely used throughout the game industry and the production of duck, geese and Traditional Farm Fresh Turkeys. The machine also lends itself to the farmer producing small numbers of premium quality poultry.

It has advantages over the wet plucking of a small number of birds.

There is not the long wait for water to heat up and the constant attention to temperature control. More importantly there is an improved shelf life for all types of dry-plucked birds and a superior finish.

FEATURES

- ✓ 0.55kw motor to drive discs
1.55kw motor to drive fan
- ✓ W 720 x H 1300 x D 1060 mm
- ✓ 240v single phase or 380/415v three phase



SET-UP OVERVIEW

1. Before plugging the machine into the mains ensure that the voltage marked on the terminal box of the suction fan motor matches your mains service.
2. Connect the OUTLET PIPE (1091) to the suction fan outlet and fit a hessian sack over the opening.
3. After plugging the machine into the mains ensure the discs rotate in the same direction as the arrow on the plucker unit door.

Plucking

The MP11 has improved efficiency, which requires some practice and care with plucking of the first birds. The suction can be regulated by means of the flap.

MAINTENANCE OVERVIEW

Suction fan

Daily - remove the connection collar (2387M), remove the inspection cover (PVCBFS90) and clean the fan blades and body.

Head - Plunger

Daily - remove any feathers that may have become caught between the yoke (2321) and the roller (2327) and grease the roller.

Weekly - undo the nut & screw (4748) and remove the plunger. Clean the sleeve (2326) and the roller and yoke with light oil such as WD40 to remove deposits and prevent clogging. Before reassembling lightly smear grease around the inside of the plunger sleeve.

Fortnightly – change the spring (2323) before reassembling the plunger.

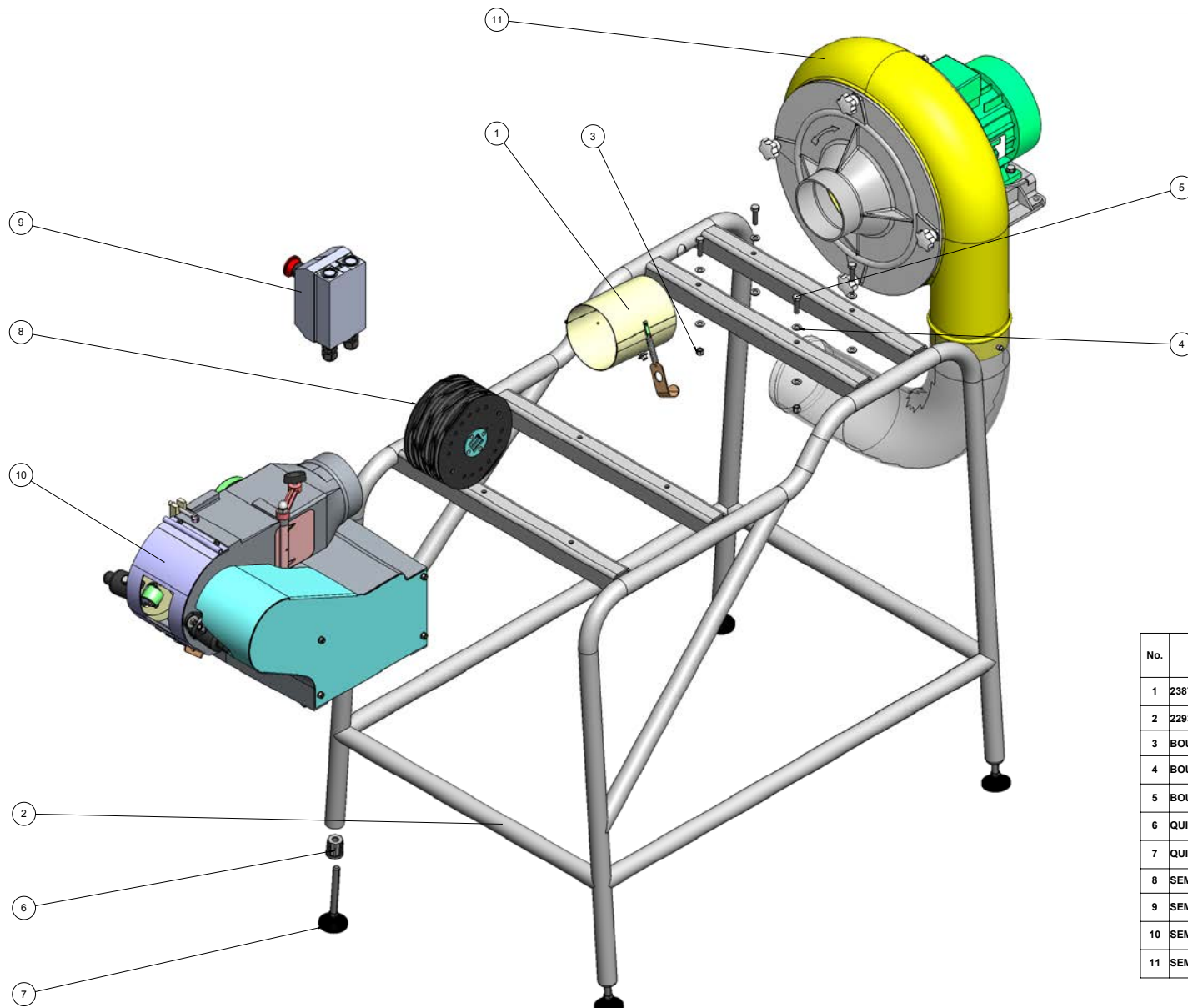
!! DO NOT OVERTIGHTEN THE NUT, AS THIS WILL CAUSE THE ROLLER YOKE TO BECOME CLAMPED INSIDE THE SLEEVE AND PREVENT IT FROM MOVING FREELY !!

Head - Discs

Daily - remove and clean the discs. Before replacing, grease all four sides of the square spindle (2350). Ensure the discs are put back in the correct order starting with no.1 and that the disc numbers are located in the same position on the spindle.

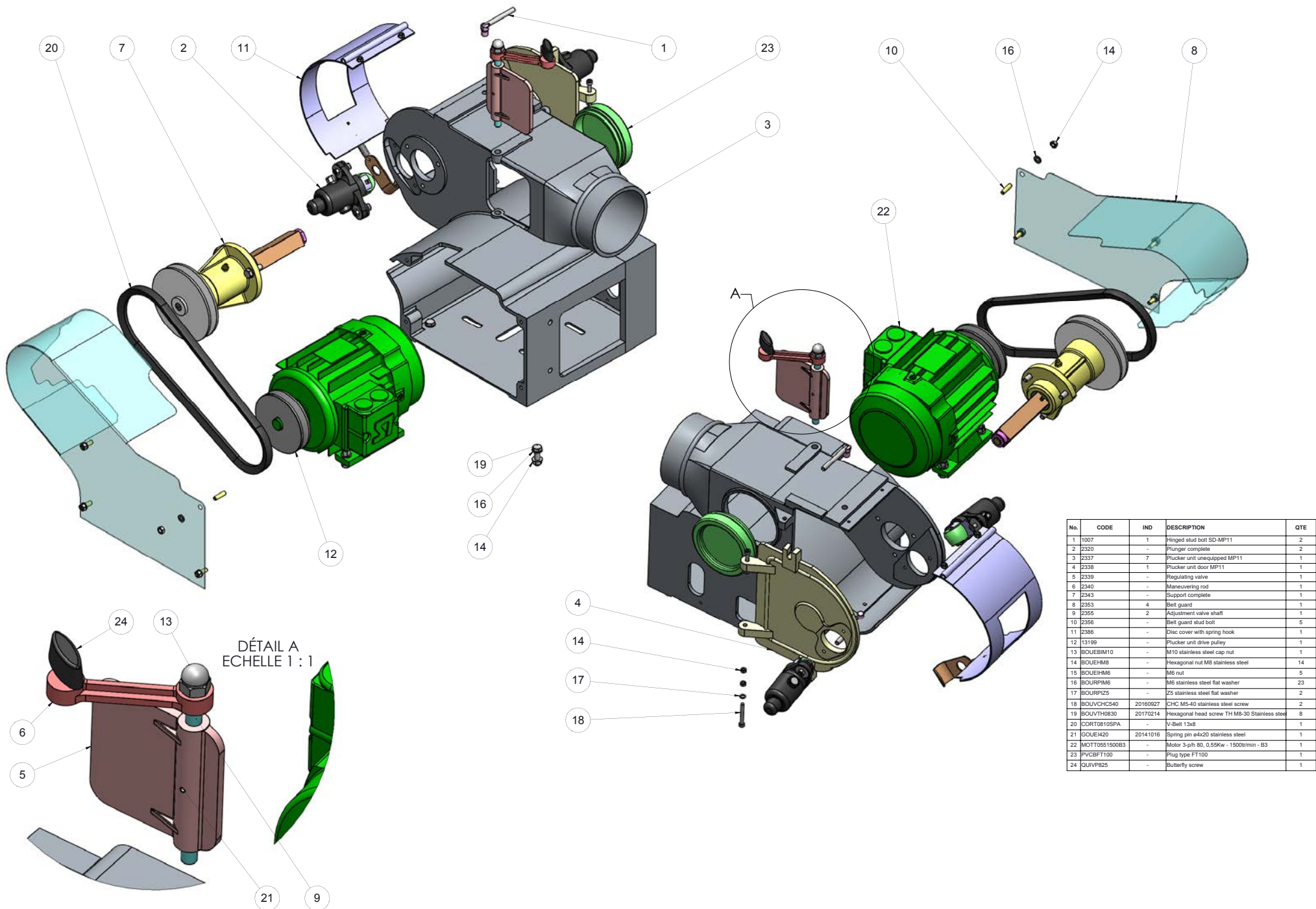
Fault Finding

- The discs may become loose due to wear on the buttons. Remove the plunger unit and remove one washer from each side.
 - If the rollers fail to rotate, clean them as detailed above.
 - If the plungers malfunction, change the springs as detailed above.
-

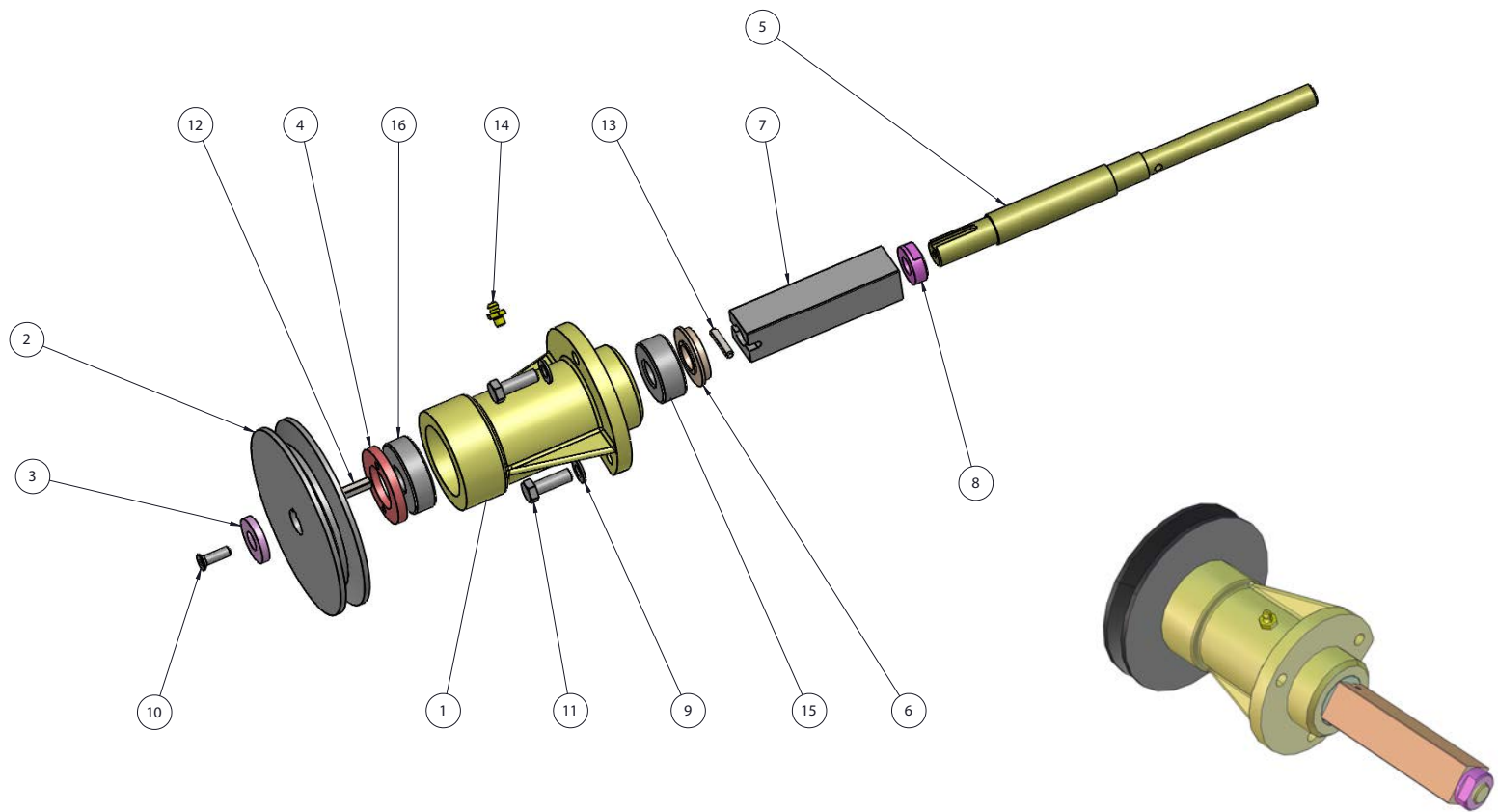


TO ORDER SPARES
 Email:
info@sedgbeer.co.uk
 Call:
 +44 (0)1761 420 058
www.sedgbeer.co.uk

| No. | CODE | IND | DESCRIPTION | QTE |
|-----|--------------|----------|--|-----|
| 1 | 2387M | - | Connection collar | 1 |
| 2 | 22934 | - | Chassis assembly MP11 | 1 |
| 3 | BOUEIH8 | - | M8 nut | 4 |
| 4 | BOURPI8 | - | Stainless steel flat washer M8 | 8 |
| 5 | BOUVTH0830 | 20170214 | Hexagonal head screw TH M8-30 Stainless steel | 4 |
| 6 | QUIBFR30M12 | - | Fixed plug with M12 tapped hole for Ø30x1 round tube | 4 |
| 7 | QUIVARTZ1250 | - | Articulated cylinder ø50 zinc-plated axis M12 ref 176105 ACC | 4 |
| 8 | SEMP11/3 | - | Set of 11 discs | 1 |
| 9 | SEMP11/8 | - | Complete 380V electric control kit | 1 |
| 10 | SEMP11T/1 | - | Complete plucker block | 1 |
| 11 | SEMP11T/2 | - | Three-phase MP11 turbine sub-assembly | 1 |

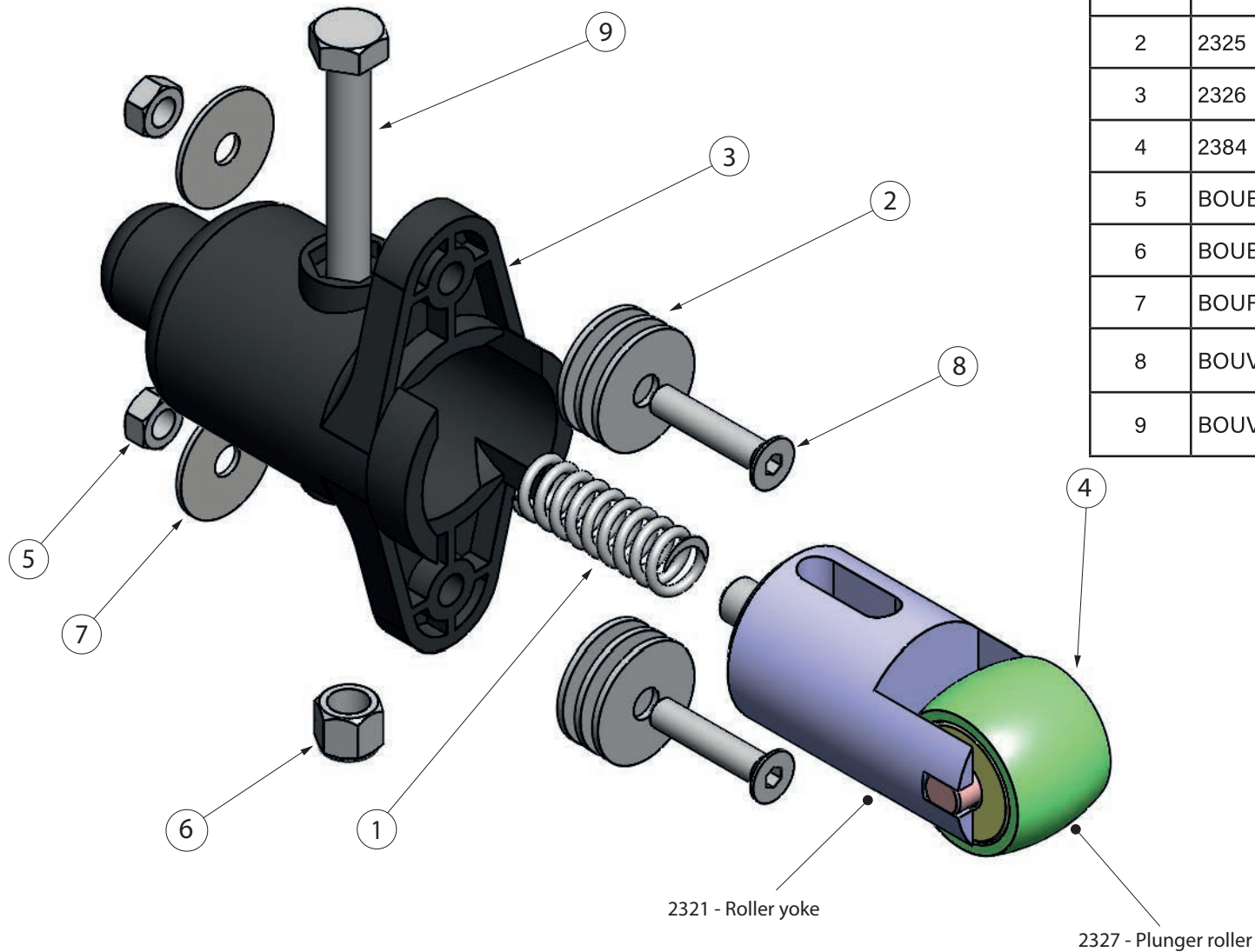


| No. | CODE | IND | DESCRIPTION | QTE |
|-----|---------------|----------|---|-----|
| 1 | 1007 | 1 | Hinged stud bolt SD-MP11 | 2 |
| 2 | 2320 | - | Plunger complete | 2 |
| 3 | 2337 | 7 | Plucker unit unequipped MP11 | 1 |
| 4 | 2338 | 1 | Plucker unit door MP11 | 1 |
| 5 | 2339 | - | Regulating valve | 1 |
| 6 | 2340 | - | Maneuvering rod | 1 |
| 7 | 2343 | - | Support complete | 1 |
| 8 | 2353 | 4 | Belt guard | 1 |
| 9 | 2355 | 2 | Adjustment valve shaft | 1 |
| 10 | 2356 | - | Belt guard stud bolt | 5 |
| 11 | 2386 | - | Disc cover with spring hook | 1 |
| 12 | 13199 | - | Plucker unit drive pulley | 1 |
| 13 | BOUEBIM10 | - | M10 stainless steel cap nut | 1 |
| 14 | BOUEHMB | - | Hexagonal nut M8 stainless steel | 14 |
| 15 | BOUEHM6 | - | M6 nut | 5 |
| 16 | BOURPIM6 | - | M6 stainless steel flat washer | 23 |
| 17 | BOURPIZ5 | - | Z5 stainless steel flat washer | 2 |
| 18 | BOUVCHC540 | 20160927 | CHC M5-40 stainless steel screw | 2 |
| 19 | BOUVTH0830 | 20170214 | Hexagonal head screw TH M8-30 Stainless steel | 8 |
| 20 | CORT0810SPA | - | V-Belt 13x8 | 1 |
| 21 | GOUEI420 | 20141016 | Spring pin e4x20 stainless steel | 1 |
| 22 | MOTT0551500B3 | - | Motor 3-ph 80, 0,56kw - 1500t/min - B3 | 1 |
| 23 | PVCBFT100 | - | Plug type FT100 | 1 |
| 24 | QUIVP825 | - | Butterfly screw | 1 |

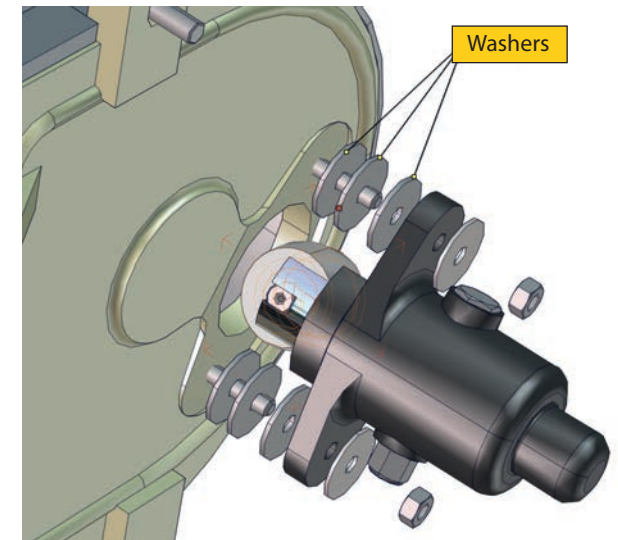


| No. | PART REF | IND | DESCRIPTION | QTE |
|-----|------------|----------|---|-----|
| 1 | 2344 | - | MP11 Support - unequipped | 1 |
| 2 | 2345 | 1 | MP11 Support - pulley | 1 |
| 3 | 2346 | - | MP11 Pulley locking plate | 1 |
| 4 | 2347 | - | MP11 support - threaded ring | 1 |
| 5 | 2348 | - | MP11 round shaft | 1 |
| 6 | 2349 | - | Support spacer | 1 |
| 7 | 2350 | 2 | Square shaft | 1 |
| 8 | 2351 | - | Lock nut | 1 |
| 9 | BOURPIM8 | - | M8 stainless steel flat washer | 3 |
| 10 | BOUVFHC620 | - | Countersunk screw FHC M6-20 Stainless steel | 1 |
| 11 | BOUVTH0825 | 20170214 | Hexagonal head screw TH M8-25 Stainless steel | 3 |
| 12 | CLAB5520 | 20150421 | Parallel key form B 5x5mm lg20mm | 1 |
| 13 | GOUEI525 | 20141016 | Spring pin ø5x25 stainless steel | 1 |
| 14 | GRADM6I | 20150605 | Straight grease nipple M6 | 1 |
| 15 | RLT42032RS | 20160222 | Double row radial contact ball bearing 17x40x16 | 1 |
| 16 | RLT63032RS | 20150309 | Ball bearing with 2 seats 6303 2RS 17.47.14 | 1 |

Support complete ref 2343



| REF NO | PART NO | IND | DESCRIPTION | QTE |
|--------|------------|----------|--|-----|
| 1 | 2323 | | Plunger spring | 1 |
| 2 | 2325 | | Plunger support washer | 6 |
| 3 | 2326 | 2 | Plunger sleeve | 1 |
| 4 | 2384 | | Plunger roller on a yoke | 1 |
| 5 | BOUEHM6 | | M6 Hex Nut | 2 |
| 6 | BOUEIHM8 | | M8 Nut | 1 |
| 7 | BOURPILL6 | | Stainless steel flat washer | 2 |
| 8 | BOUVFHC630 | | Countersunk screw M6 Stainless steel | 2 |
| 9 | BOUVTH0855 | 20170214 | Hexagonal head screw M8 Stainless steel | 1 |

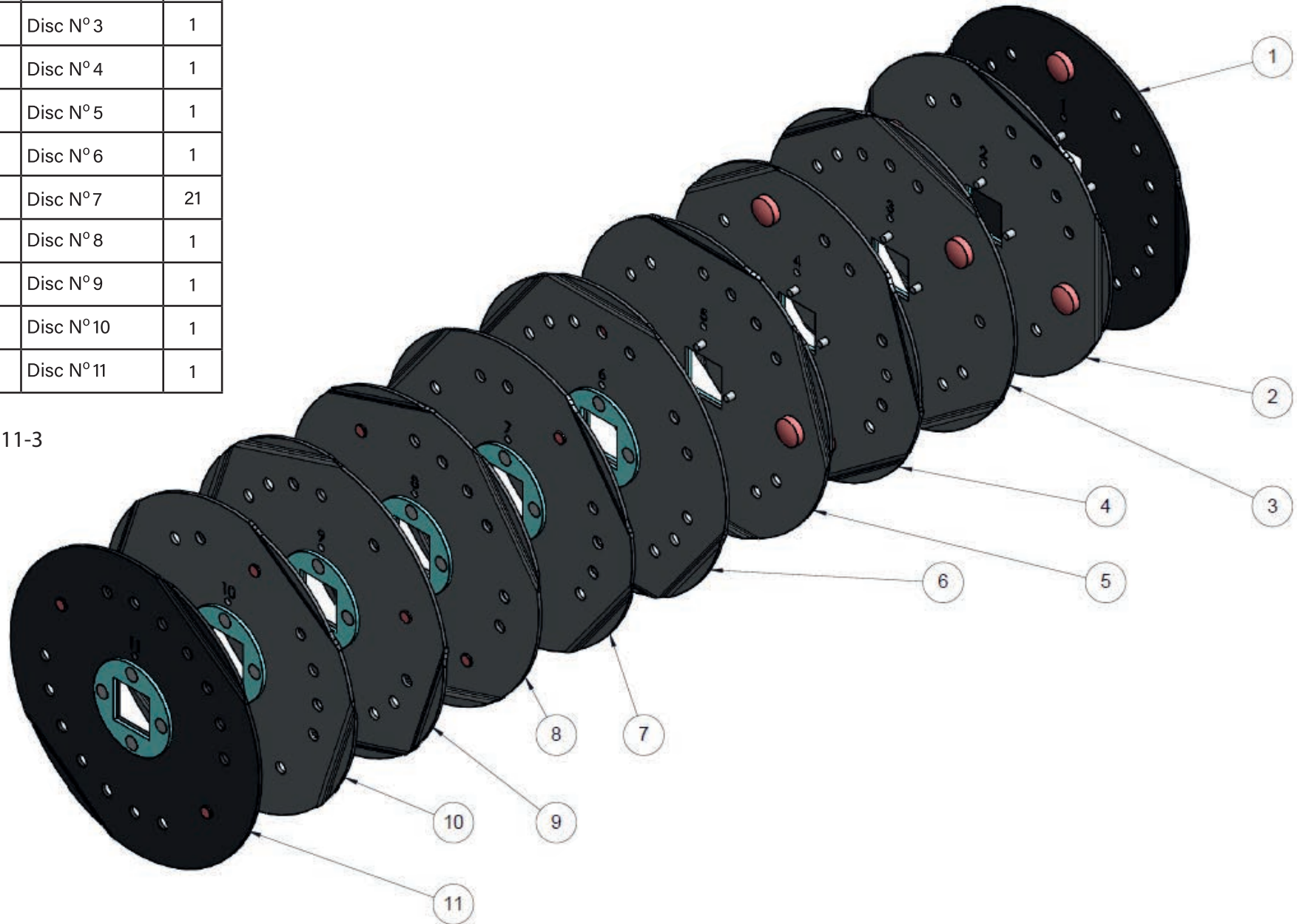


Note: As the discs and the plunger spring wear, remove the washers one by one, (Ref 2), located between the plucker unit and the plunger. Remove the washer as soon as the disc set has too much lateral movement or if the disc cover is rubbed by the discs.

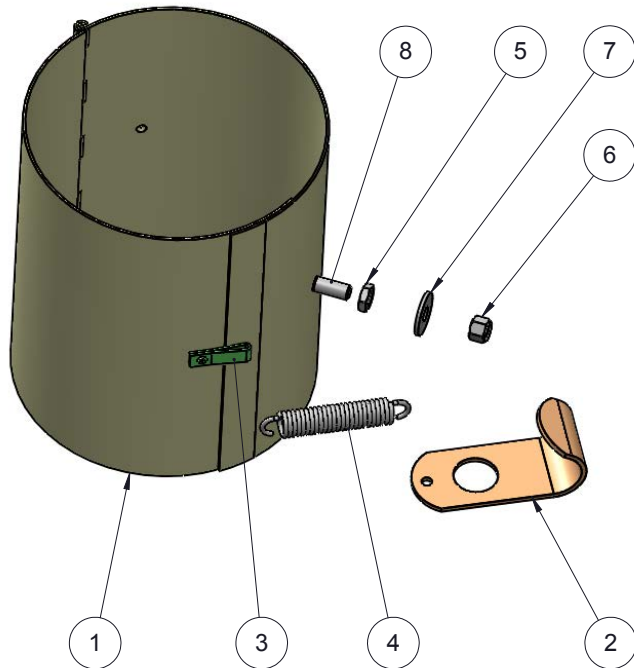
When replacing the plunger or the spring, put the 3 washers back in place.

| REF NO | PART NO | IND | DESCRIPTION | QTE |
|--------|---------|-----|-------------|-----|
| 1 | 2309/11 | - | Disc N° 1 | 1 |
| 2 | 2310/11 | - | Disc N° 2 | 1 |
| 3 | 2311/11 | - | Disc N° 3 | 1 |
| 4 | 2312/11 | - | Disc N° 4 | 1 |
| 5 | 2313/11 | - | Disc N° 5 | 1 |
| 6 | 2314/11 | - | Disc N° 6 | 1 |
| 7 | 2315/11 | - | Disc N° 7 | 21 |
| 8 | 2316/11 | - | Disc N° 8 | 1 |
| 9 | 2317/11 | - | Disc N° 9 | 1 |
| 10 | 2318/11 | - | Disc N° 10 | 1 |
| 11 | 2319/11 | - | Disc N° 11 | 1 |

The disc set mounts from number 1 to number 11, the numbers should all line up in the same place and the operator should be able to read them



Set of 11 Discs - SEMP11-3



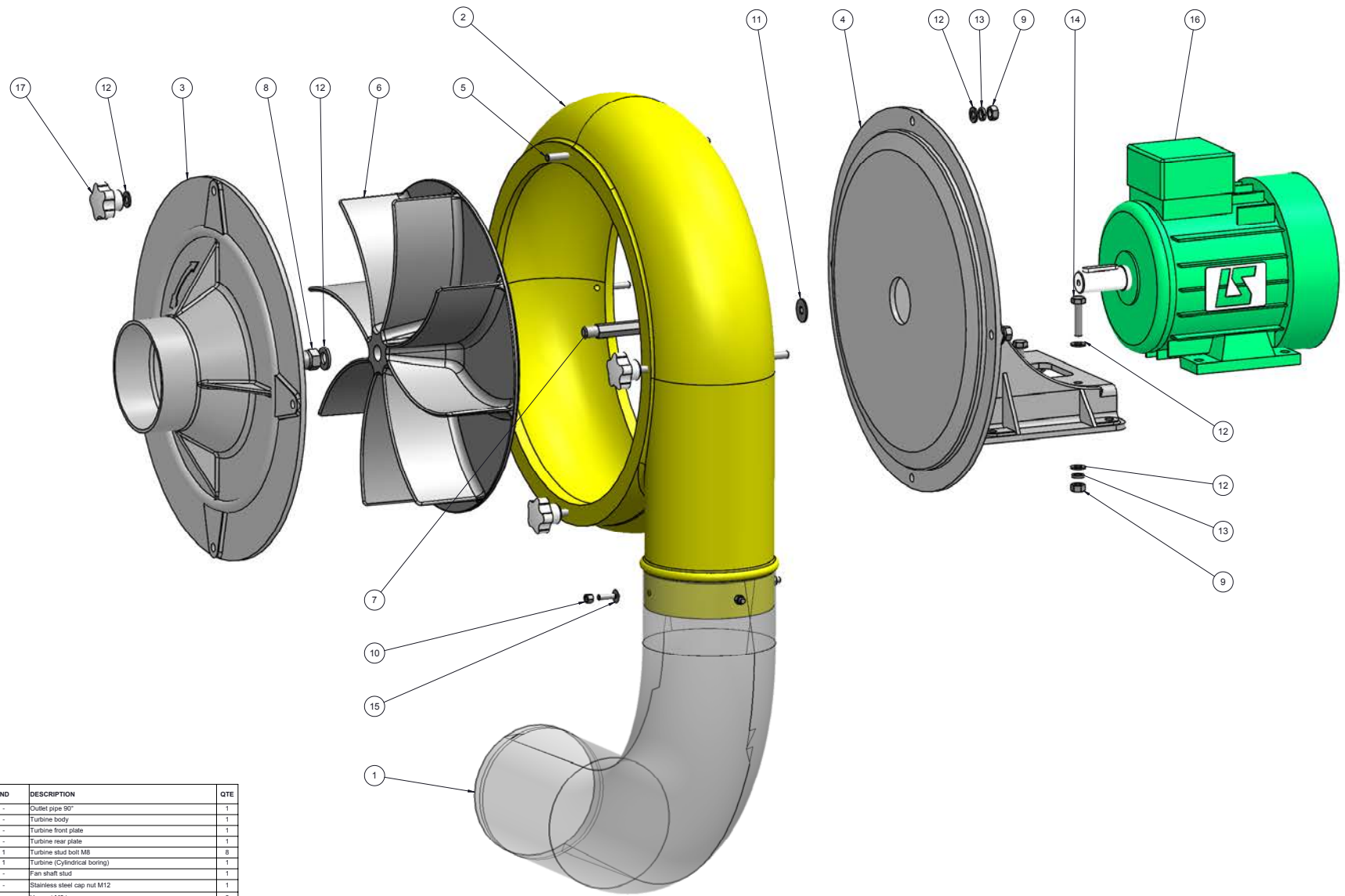
| No. | PART REF | IND | DESCRIPTION | QTE |
|-----|------------|-----|--------------------------------|-----|
| 1 | 2387 | - | Connection collar | 1 |
| 2 | 16089 | - | Connection collar hook | 1 |
| 3 | 16090 | - | Spring cage | 1 |
| 4 | 16091 | - | Connection collar spring | 1 |
| 5 | BOUEHBM6 | - | M6 nut | 1 |
| 6 | BOUEIHM6 | - | M6 nut | 1 |
| 7 | BOURPIL6 | - | Stainless steel flat washer L6 | 1 |
| 8 | BOUVTP0616 | - | Pan head screw M6x16 | 1 |

TO ORDER SPARES

Email:
info@sedgbeer.co.uk

Call:
 +44 (0)1761 420 058

www.sedgbeer.co.uk



| No. | PART REF | IND | DESCRIPTION | QTE |
|-----|--------------|----------|---|-----|
| 1 | 1091 | - | Outlet pipe 60° | 1 |
| 2 | 2336 | - | Turbine body | 1 |
| 3 | 2341 | - | Turbine front plate | 1 |
| 4 | 2342 | - | Turbine rear plate | 1 |
| 5 | 2352 | 1 | Turbine stud bolt M8 | 8 |
| 6 | 10516 | 1 | Turbine (Cylindrical boring) | 1 |
| 7 | 10517 | - | Fan shaft stud | 1 |
| 8 | BOUEBIM12 | - | Stainless steel cap nut M12 | 1 |
| 9 | BOUEHMB | - | Hex nut M8 inox | 8 |
| 10 | BOUEHMB | - | Nut H M8 | 4 |
| 11 | BOURPIL8 | - | Stainless steel flat washer L8 | 1 |
| 12 | BOURPIM8 | - | M8 stainless steel flat washer | 17 |
| 13 | BOURW8 | 20160927 | Washer W Ø 8 | 8 |
| 14 | BOUVTH0835 | 20170214 | Hexagonal head screw TH M8-35 Stainless steel | 4 |
| 15 | BOUVTP0620 | - | Plan head screw M6x20 | 4 |
| 16 | MOTT1S3000B3 | - | 3 p-H an motor 1.5 Kw - 3000 rpm - B3 | 1 |
| 17 | QUIBETM8 | - | M8 threaded bakelite star button | 4 |